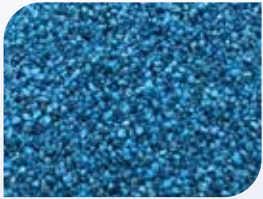


# Pigmented Aggregates

**BLUE**

RAL 5012



**DARK BLUE**

RAL 5015



**LIGHT BLUE**

RAL 5024



**LIGHT GREEN**

RAL 6001



**DARK GREEN**

RAL 6002



**RED**

RAL 3020



**MAGENTA**

RAL 4008



**TURQUOISE**

RAL 517



**ORANGE**

RAL 2008



**BEIGE**

RAL 2003



**YELLOW**

RAL 1016



**WHITE**

RAL 9016



**DARK GREY**

RAL 7001



**LIGHT GREY**

RAL 7004



**BLACK**

RAL 7022



**LIGHT GREY**

RAL 7023



# Pigmented Aggregates

## LIGHT GREY

RAL 7033



## GREY

RAL 7037



## LIGHT GREY

RAL 7044



## BLACK

RAL 9005



## LIGHT GOLD



## COPPER BROWN



## LIGHT ORANGE

RAL 2003



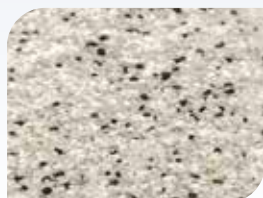
## MIX OF RED, GREY, WHITE & CREAM



## MIX OF BROWN & CREAM



## MIX OF BLACK, WHITE & CREAM



## MIX OF BLUE, BLACK & WHITE



## MIX OF RED, BLACK & WHITE



### Appearance

Natural Rounded

### Standard Sizes

0.4 - 0.8 mm, 1 - 2 mm  
2 - 2.5 mm, 2 - 5 mm

### Coating

Single or Double Coating depending  
on colour

### Properties

UV Stable Product

### Colour Shades

We can match any RAL colours up to 95%  
Mixing of different colours made possible  
according to customer needs